
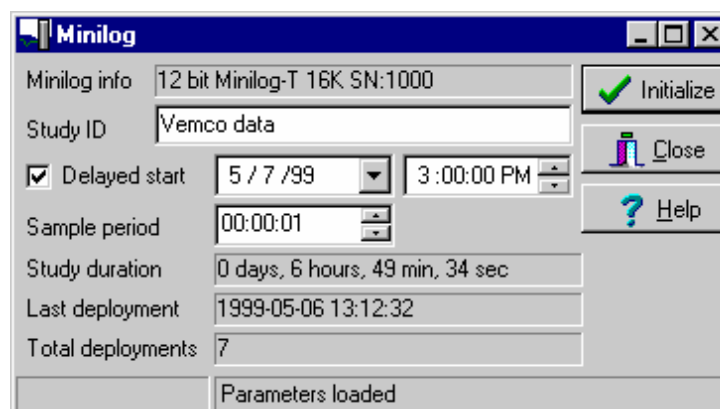


Minilog Basic Procedure

This section is designed as instructions for basic Minilog use. It assumes that the Minilog Windows software is installed and the Minilog Windows PC computer interface is connected to the computer. For details on any aspect of this list, please see the Help feature in the Minilog Windows software.

1. Initialize Minilog:


- a. Run Minilog Windows software.
- b. Place the Minilog in the cup in the top of the Minilog Windows PC computer interface so the serial number on the back of the Minilog is facing up.
- c. Rotate the Minilog in the interface until the silver temperature sensor drops into the guide hole in the interface. The serial number on the Minilog should be in the same orientation as the text on the top of the interface.
- d. Click the *Initialize Minilog* button with the green arrow, shown here on the right. The software will communicate with the Minilog and display the Minilog information in the Minilog window (see below). 
- e. Enter the study identification, delayed start date (optional), and the sample period.
 - i. **Study ID** - Enter any identification that will help keep track of the data.
 - ii. **Delayed start** - If the delayed start box is not checked, the Minilog will begin recording data as soon as the initialization is completed. If the box is checked, the Minilog will not begin recording data until the date and time specified (see Minilog Help for additional information).
 - iii. **Sample period** - Select the length of time between data readings. The *Study duration* line directly below the *Sample period* will reflect the time required to fill the memory given the chosen sample period.
- f. Click the *Initialize* button in the top right corner (with a green checkmark).
- g. Wait while the Minilog is initialized. A prompt will appear informing you that the Minilog is initialized.
- h. Remove the Minilog from the computer interface. NOTE: Do not communicate with the Minilog again until the data is collected. Any communication will take the Minilog out of recording mode (stop the study).



2. Collect Data:

- a. Deploy the Minilog as desired. The temperature sensor is in the silver point protruding from one end of the Minilog. The pressure sensor (if applicable) is the silver disc next to the temperature sensor. Warning: Do not deploy the Minilog to a depth greater than the pressure sensor is rated for or the sensor will be damaged.
- b. Retrieve the Minilog when data collection is complete.
- c. Dry the Minilog completely to prevent any water from coming in contact with the electronics in the computer interface.

3. Load data from Minilog:

- a. Run Minilog Windows software.
- b. Place the Minilog in the Minilog Windows PC computer interface as described in Steps 1.b and 1.c.
- c. Click the *Load data from Minilog* button with the red arrow, shown here on the right. The software will communicate with the Minilog and begin to download the data from the Minilog's memory. 
- d. Wait while the data is downloaded from the Minilog. A bar in the bottom left corner of the *Downloading data* window shows the progress of the download.
- e. Select the YES button when prompted if you want to view the graph of the data.
- f. Remove the Minilog from the computer interface.

© (2007) AMIRIX Systems Inc. All rights reserved. The information contained herein includes information which is confidential and proprietary to AMIRIX Systems Inc. and may not be used or disclosed without prior written consent of AMIRIX Systems Inc.

DOC-4616-01