

Functionality of USB-RS232 Adapters with VEMCO RS-232 Products Troubleshooting

Will VEMCO RS-232 products (Minilog Reader and VR2PC Interface) work with a USB-RS232 adapter?

Yes. VEMCO has tested several USB-RS232 adapters for functionality with our legacy serial interfaces. These include the Minilog reader and the VR2PC interface for use with the VR2 line of products. VEMCO recommends the NEXXTECH USB Serial Adapter Model number 2613297.

Where can I get a USB-RS232 adapter?

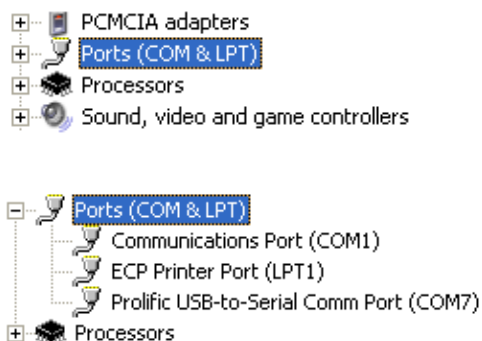
These adapters can be picked up at most computer vendors or electronics outlets.

How do I install this adapter?

When plugged into a USB port on your PC, the operating system (XP or Vista) will prompt you for the driver CD that was included with the adapter. Windows will then install the drivers automatically for the adapter allowing for its usage. Your adapter will contain a user manual with more in-depth instructions.

My device will not communicate with my XP? What could be wrong?

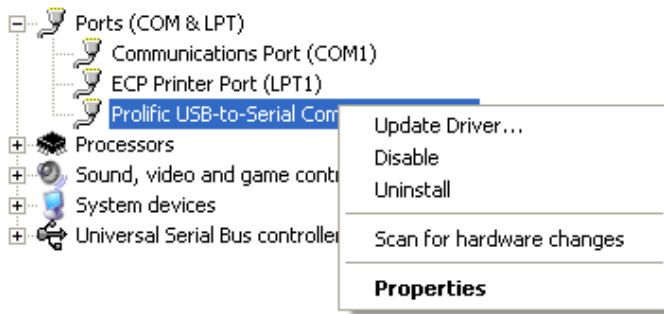
One key factor in the use of a USB – RS232 adapter is to make sure the correct drivers are installed for the adapter. This can be done by opening the control panel and selecting the System icon. Once open, you will see seven tabs. Select Hardware and under that select Device Manager. Look down until you see PORTS. Click the plus (+) sign beside it to see the devices under the PORTS heading as shown below.



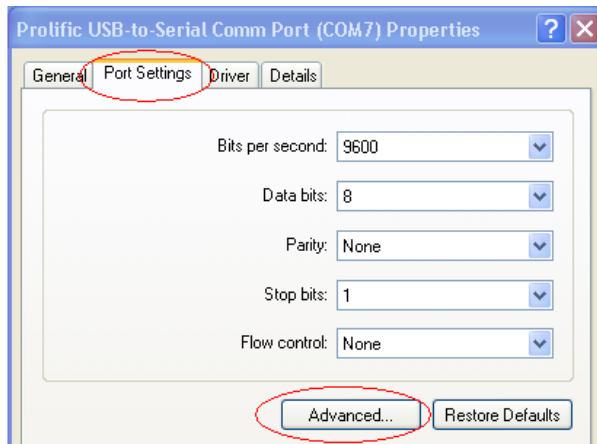
If at this point there is a yellow exclamation point on the USB adapter, there is a driver/software problem that needs to be corrected. Simply rebooting the PC can sometimes fix this problem or reloading the driver software that came with the adapter. Please refer to your user manual that came with the adapter for instructions.

Once open you should see the newly installed USB – RS232 adapter denoting its COM port number. VEMCO legacy products use COM 1 through 4. In this case, the USB adapter has assigned it COM 7 and it will not work with the VEMCO software and will need to be changed. If your adapter was assigned COM 1 through 4, nothing will need to be changed and the following steps can be skipped.

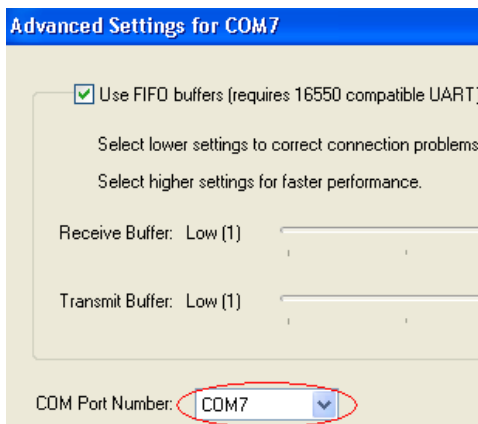
Right click on the USB adapter and select Properties as shown below.



When the properties windows appears, select the Port Settings tab and click the advanced button. This will open the port settings for the adapter.



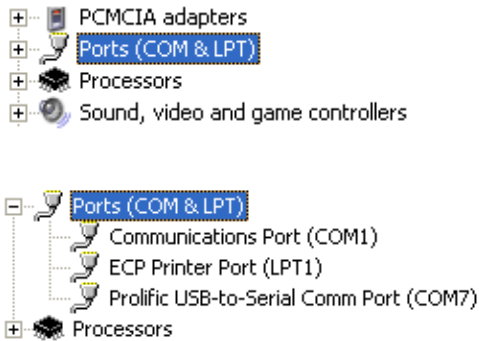
You will notice that the port number assigned to the adapter can be changed here. Change the port number to any port between 1 and 4.



Some COM ports may show "in use". In this instance, select one that is not in use. The COM port number will now show the new port assigned to it. Make note of this as this will be the port number used in the VEMCO software. A simple reboot of the PC may "free" up a COM port that is in use.

My device will not communicate with my Vista PC. What could be wrong?

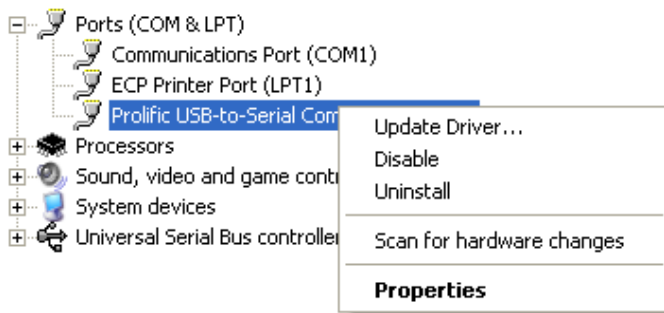
Windows Vista aside from looking quite different visually from Windows XP follows the same basic steps for changing the COM port. Open the control panel and select Control Panel Home from the left side menu. Select the System and Maintenance icon. Now you must select the System icon and select Device Manager from the Tasks list on the left side of the screen. Look down until you see PORTS. Click the plus (+) sign beside it to see the devices under the PORTS heading as shown below.



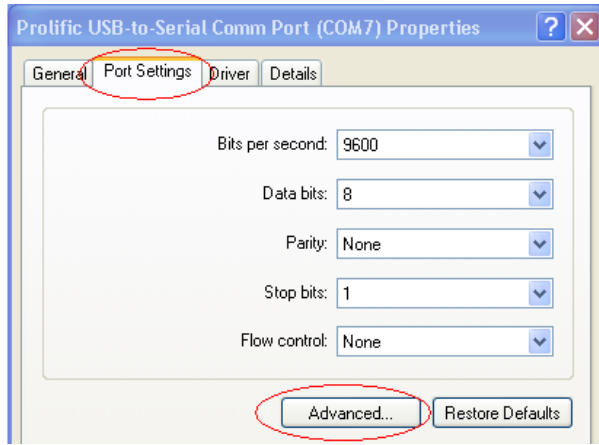
If at this point there is a yellow exclamation point on the USB adapter, there is a driver/software problem that needs to be corrected. Simply rebooting the PC can sometimes fix this problem or reloading the driver software that came with the adapter. Please refer to your user manual that came with the adapter for instructions.

Once open you should see the newly installed USB – RS232 adapter denoting its COM port number. VEMCO legacy products use COM 1 through 4. In this case, the USB adapter has assigned it COM 7 and it will not work with the VEMCO software and will need to be changed. If your adapter was assigned COM 1 through 4, nothing will need to be changed and the following steps can be skipped.

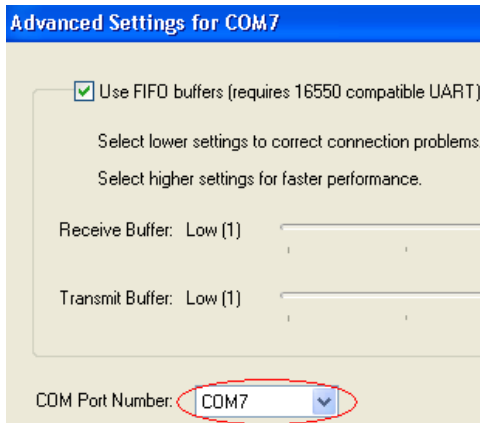
Right click on the USB adapter and select Properties as shown below.



When the properties windows appears, select the Port Settings tab and click the advanced button. This will open the port settings for the adapter.



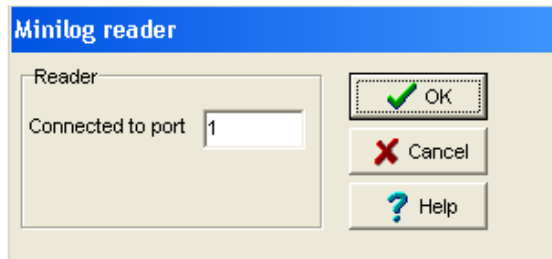
You will notice that the port number assigned to the adapter can be changed here. Change the port number to any port between 1 and 4.



Some COM ports may show "in use". In this instance, select one that is not in use. The COM port number will now show the new port assigned to it. Make note of this as this will be the port number used in the VEMCO software. A simple reboot of the PC may "free" up a COM port that is in use.

How do I change the COM port in VEMCO Minilog software?

Once you open the Minilog Reader software, click on Defaults -> Com Port. Select the Com port you set the USB adapter to in the previous steps and click OK



How do I change the COM port in VEMCO VR2PC software?

Once you open the VR2PC software, click on Setup -> Serial Ports. Select the Com port you set the USB adapter to in the previous steps and click OK

