



This VR2Tx Quick Guide provides basic information on key VR2Tx procedures. Full details for all VR2Tx procedures are found in the VR2Tx User manual. We strongly recommend you study the full user manual before using this quick guide.



Do not bump the VR2Tx hydrophone or expose it to extreme temperature variations. Doing so may damage the receiver and render it unable to detect transmitters.

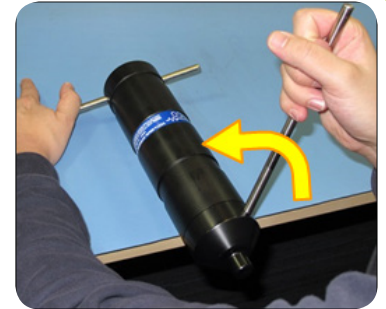
Open Case

Place VR2Tx on clean, stable surface so hydrophone hangs off edge. We recommend working in a controlled environment.

Insert one steel rod into the Attachment hole and other one in the Bluetooth Activator Hole on the end-cap and hold on to the rods.

Apply pressure to the rod in the Bluetooth Activator Hole to turn end-cap counter-clockwise when you are facing the hydrophone. Remove rod when end-cap turns easily and continue turning by hand.

Slide end-cap and cylinder apart until the battery compartment has cleared the cylinder. Be very careful not to damage the threads on the end-cap or the VR2Tx won't close and seal properly.



Electronics inside the case must **NEVER come in contact with any water** or the VR2Tx will be damaged.

Main Battery

The battery is held in the battery compartment by a plastic pin spanning the opening. Remove the thin O-ring before removing the pin (O-ring holds pin in place). Downward force on battery may be needed to allow pin to move.



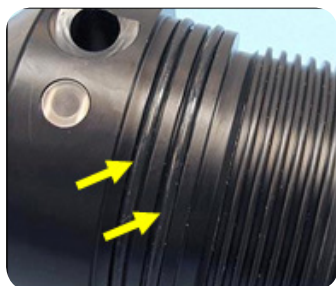
The battery is connected to VR2Tx on the side of the case. When installing the battery, listen for a "click" and watch that light flashes four times and then twice quickly every 5 seconds. When disconnecting battery, press the release tab on the battery connector and then pull connector halves apart.



TIP: Write the date on the battery.

O-rings

Make sure the two O-rings in the end-cap, and the corresponding O-ring surface inside the Outer Cylinder, are clean and debris-free. If the VR2Tx has previously been deployed, replace the O-rings.



Close Case

Close the VR2Tx case by doing the reverse of opening it, but **first put three new desiccant packs in the bottom of the tube.** Slide the flat end into the Outer Cylinder. Rotate the end-cap clockwise, using the steel bars when needed.

Stop turning when the gap between the two halves is closed. Over tightening could damage the case.

NOTE: Desiccant packs help reduce the occurrence of condensation in the VR2Tx.



Activate Bluetooth

Slide the smaller end of the Bluetooth Activator in the Bluetooth Activator Hole on the VR2Tx, near the hydrophone.

Wait until the Status Light begins flashing a bright, long, steady flash once a second. The wait time is less than five seconds. Remove the Bluetooth Activator.



One bright flash every second.

Connect to VUE

Open VUE and wait while software scans for the activated VR2Tx. If it doesn't scan, then click the "Device Scan" button.



When VR2Tx appears, double-click on the receiver icon with the correct serial number to open communication.



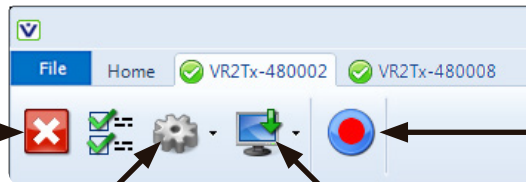
VR2Tx Status Light is continuously on during communication.

Bluetooth only works through air.

VUE Software

Actions such as starting a study, offloading data, and ending communication are performed from the Receiver Tab and are started by selecting the correct icon in the tab's ribbon. Details are found in the VR2Tx user manual.

Close View – ends communication with VR2Tx and closes Receiver tab. Receiver resumes recording (does not initialize).



Start Recording – setup and begin a study; also erases VR2Tx memory

Device Options – change Transmit Profile, logging options, or setup a Watch Table.

Offload data – choose to offload all data or just new data.

Attachment

The common method used to attach a VR2Tx receiver to a mooring line is to use five cable ties (zip tie or tie-wrap) with the following characteristics:

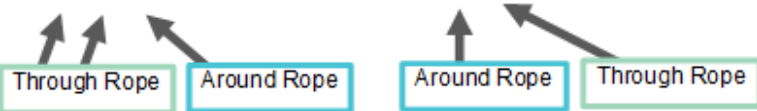
- 388 mm (15.25") long
- 7.5 mm (0.3") wide
- UV protected
- 120 lb tensile strength



Open the "wrap in the rope" to pass the cable tie through the rope.

Avoid shadowing or blocking the receiver with your mooring equipment. Line of sight is a must!

Suggested minimum: 3/8" diameter nylon rope



Status Light

No flashes = no power

2 quick **red** flashes every 5 sec = in Recording Mode

2 quick **red** flashes every 10 sec = memory is full

1 quick **red** flash = acoustic ping received

1 bright, long **red** flash = detection written to memory

1 long **red** flash per sec = ready for Bluetooth communication

On (solid **red**) = communicating with VUE

One short **green** flash = acoustic ping was transmitted

One long **green** flash = transmitted pings written to memory

Basic instructions for communicating acoustically with a VR2Tx while deployed are found in the Receiver Field Communication Quick Guide.

Operating temperature: -5 °C to 40 °C; Water in which the VR2Tx is deployed must not freeze.

Static depth rating: 500 meters (730 psi)